

How proactive monitoring will help your business weather any storm



You're the captain of your own ship. Your crew, a team of hardworking employees, rely on your vessel's technology to help navigate the stormy waters of business. Everything seems calm on the surface right now, and you're cruising along smoothly... **but beneath the waves, danger lurks.**

You, the fearless captain, decide to take a laid-back approach when it comes to monitoring your ship's vital systems. "Why bother with all that tech stuff?" you think. "It's working fine."

But oh boy, are you in for a surprise!

One day, out of the blue, a massive digital kraken (let's call it a cyber attack) emerges from the depths of the internet. It tentacles its way into your ship's systems, causing havoc.

Chaos ensues! Your navigation goes haywire, communications are down, and your cargo – sensitive data – starts leaking like a broken tap.

Your crew, those loyal employees, are left scrambling. Customers are unhappy, and your reputation takes a nosedive. You find yourself in a real-life IT disaster movie.

Why did this happen? It's simple. You took a reactive approach to monitoring your network and its devices. You didn't keep an eye on the radar, and you didn't have a lookout watching for danger. You were sailing blind, and you hit that cyber-kraken head-on.

Have you ever been caught off guard by a tech disaster? Have you experienced the chaos of downtime or a security breach? If so, you're not alone.



Why proactive monitoring is critical

Cyber attacks are a daily reality for businesses big and small. Cyber criminals are constantly on the lookout for vulnerabilities.

Proactive monitoring is like having a trusty lookout perched high in the crow's nest of your ship, scanning the horizon for any signs of danger. It's about staying one step ahead of trouble and preventing issues before they become full-blown crises.

Your network and devices are the lifeblood of your business. They help you communicate with your team and your customers, and they store your valuable data. If any of these systems were to fail or be compromised, it would be a disaster for your business.

But with proactive monitoring in place, you'll know the moment something starts to go awry. Some of the key benefits of proactive monitoring are:

Early threat detection

Proactive monitoring can spot unusual activity or potential security breaches before they become catastrophic.

Reduced downtime

When your systems go down, it can cost you time, money, and customers. Proactive monitoring helps identify and address issues before they lead to downtime.

Cost savings

Repairing a small leak is far less costly than trying to salvage a sunken ship. Proactive monitoring can save you money by addressing problems when they're manageable, rather than waiting for a catastrophic failure.

Enhanced performance

Proactive monitoring ensures your systems are running at peak performance. It can help identify areas where you can optimise your technology to boost efficiency.

Peace of mind

Knowing that your systems are being watched over gives you peace of mind. You can focus on steering your business toward success, rather than worrying about lurking threats.



Proactive vs reactive monitoring

Confused about the differences between proactive and reactive monitoring? They might sound like two sides of the same coin, but they're as different as smooth sailing and a shipwreck.

Think of proactive monitoring as having a trusty lookout, ready to act at the first sign of trouble. This vigilant crew member isn't just watching the waves; they're actively scanning for any hint of a storm forming on the horizon.

Proactive monitoring goes beyond just keeping an eye on things. It's about setting up automated systems and alerts that can detect anomalies and potential issues before they become crises.

For instance, if your network starts to experience a spike in traffic, that could indicate a DDoS attack (Distributed Denial of Service, where your system is crippled by a flood of traffic), proactive monitoring will alert you immediately. You can then take action to defend your network before it's overwhelmed.

On the other hand, reactive monitoring is like having a crew member who might occasionally wake up to check the horizon, but they're not actively watching for trouble.

Reactive monitoring relies on periodic checks or manual interventions. It's like only checking your systems when you remember to, rather than having constant, real-time awareness. This approach leaves your business vulnerable to threats that might go undetected for days or even weeks.

Imagine a scenario where your email server suddenly crashes due to an overload of incoming messages. With reactive monitoring, you might not notice until your customers start complaining about missed emails. By then, you're already in damage control mode.

Proactive monitoring offers these advantages >>





Real-time awareness

You're always in the know about what's happening in your digital ecosystem.



Immediate action

When trouble is detected, proactive monitoring can trigger automated responses or alert your IT team, allowing for swift action.



Risk mitigation

By identifying and addressing potential issues early, you reduce the risk of major disruptions and costly downtime.



Efficiency

Proactive monitoring keeps your systems running smoothly, ensuring your business operations remain efficient and uninterrupted.

In contrast, reactive monitoring can leave you blind to threats until it's too late, resulting in costly downtime, frustrated customers, and potentially irreparable damage to your reputation.

Boosting your bottom line

Now that you understand how proactive monitoring can keep your business better protected, it's time to discover how it can also boost your business's bottom line.



Cost savings

By identifying and addressing potential issues before they become costly catastrophes, proactive monitoring helps you save a pretty penny.

For instance, it can detect hardware failures or impending system crashes, allowing you to replace or repair them before they lead to expensive downtime. In the long run, these savings add up.

Increased productivity

When your systems are sailing smoothly, your people can focus on their tasks without being constantly interrupted by technical issues. In turn, you can focus on business growth without constant interruptions from your people.

Think about it this way: your business operates more efficiently when your technology is on top form. This increased productivity translates to more profit.

Enhanced security

Your data is valuable, and proactive monitoring acts as your guardian, protecting it from cyber criminals. Detecting and thwarting security threats in real-time ensures your sensitive information stays safe and secure.

Remember the cyber-kraken we talked about in the introduction? Proactive monitoring is like having a fleet of digital cannons ready to repel such threats, keeping your treasure chest locked tight.

Improved customer satisfaction

Smooth sailing for your business means happier customers. When your systems are reliable, your team can provide top-notch service, and your customers will sing your praises.

Customer satisfaction is worth its weight in gold. Happy customers are more likely to return to your business and recommend it to others, leading to increased revenue.

Competitive advantage

Staying ahead of the competition is crucial. Proactive monitoring gives you an edge by ensuring your technology is always up to date and operating at peak performance.

If you have the right tools, the fastest systems, and the most suitable security, you'll outpace your rivals, securing more opportunities along the way.

How to get started

So, now you understand why proactive monitoring is a crucial part of any successful business, it's time to make a plan. And I know, that sounds like a technical nightmare, but don't worry, you don't need to be a tech wizard to get it right. Here are some simple steps to help you get started...



Assemble your team

Every successful business needs a capable team, and setting up proactive monitoring is no different. You'll need to gather a trusted team who can help you implement and manage the monitoring system. If you're already working with a trusted IT support partner, they should already be doing this for you. If you're not, we'd love to help.



Define your objectives

As with everything else in your business, it's essential to set clear objectives. What do you want to achieve with proactive monitoring? Do you want to enhance security, reduce downtime, or improve system performance? Having well-defined goals will guide your efforts and help you measure success.



Choose the right tools

You'll need the appropriate monitoring tools for your business. These can vary depending on your specific needs, but they generally include network monitoring software, security software, and hardware monitoring solutions. Your IT support partner can help you select the best tools for your goals.



Configure and implement

Once you have your tools in hand, it's time to configure and implement them. This may sound daunting, but remember, your IT team is there to assist. These tools often come with user-friendly interfaces that allow you to set up monitoring parameters, define alerts, and establish automated responses.



Monitor and adjust

With your monitoring system in place, you're all set. Regularly check the data and alerts generated by your monitoring tools. When issues arise, address them promptly. Over time, you'll refine your monitoring strategy, making it even more effective.



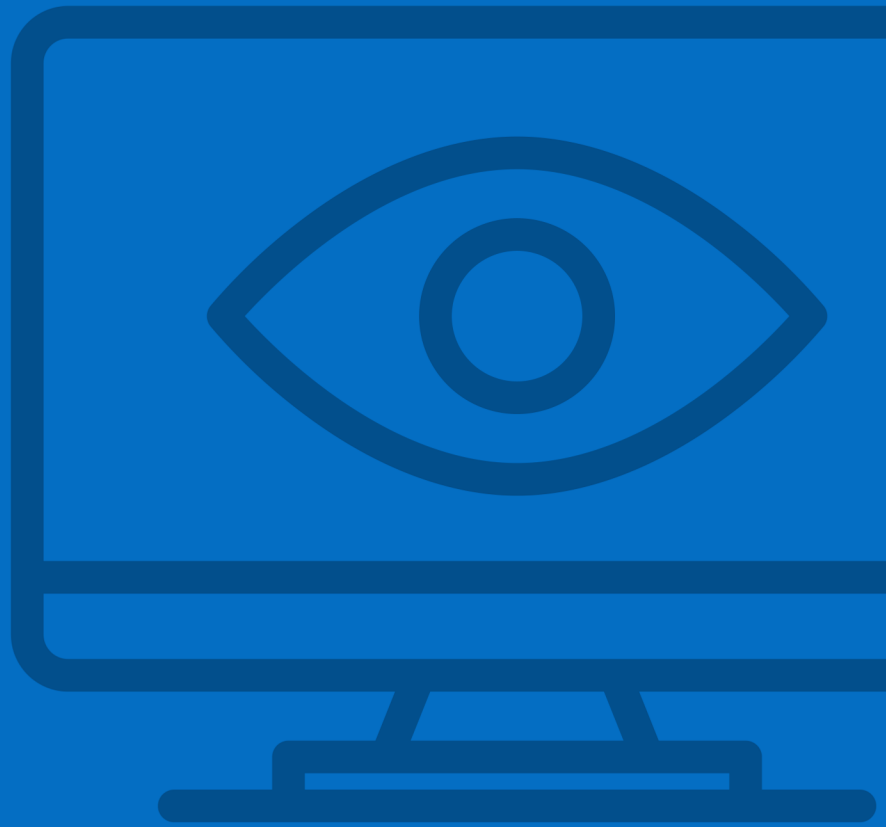
Educate your team

Your employees play a vital role in this journey. They need to be aware of the importance of proactive monitoring and how it affects their day-to-day tasks. Provide training and resources to ensure they know how to respond to alerts or potential threats.



Stay informed

The world of technology is ever-changing. Stay informed about the latest threats, vulnerabilities, and best practices in proactive monitoring. Attend industry conferences, read tech blogs... **or let us do all of that for you.**



And there you have it. You're now well-equipped to begin proactively monitoring your systems to spot issues before they arise. Yes, there's a lot to consider, but with the right team behind you it doesn't have to be a headache.

If you're looking for an IT support partner you can trust to help you with this - or anything else - we'd love to talk.

Get in touch.

CALL: 01299 382 321
EMAIL: hello@blisstech.co.uk
WEBSITE: www.blisstech.co.uk

